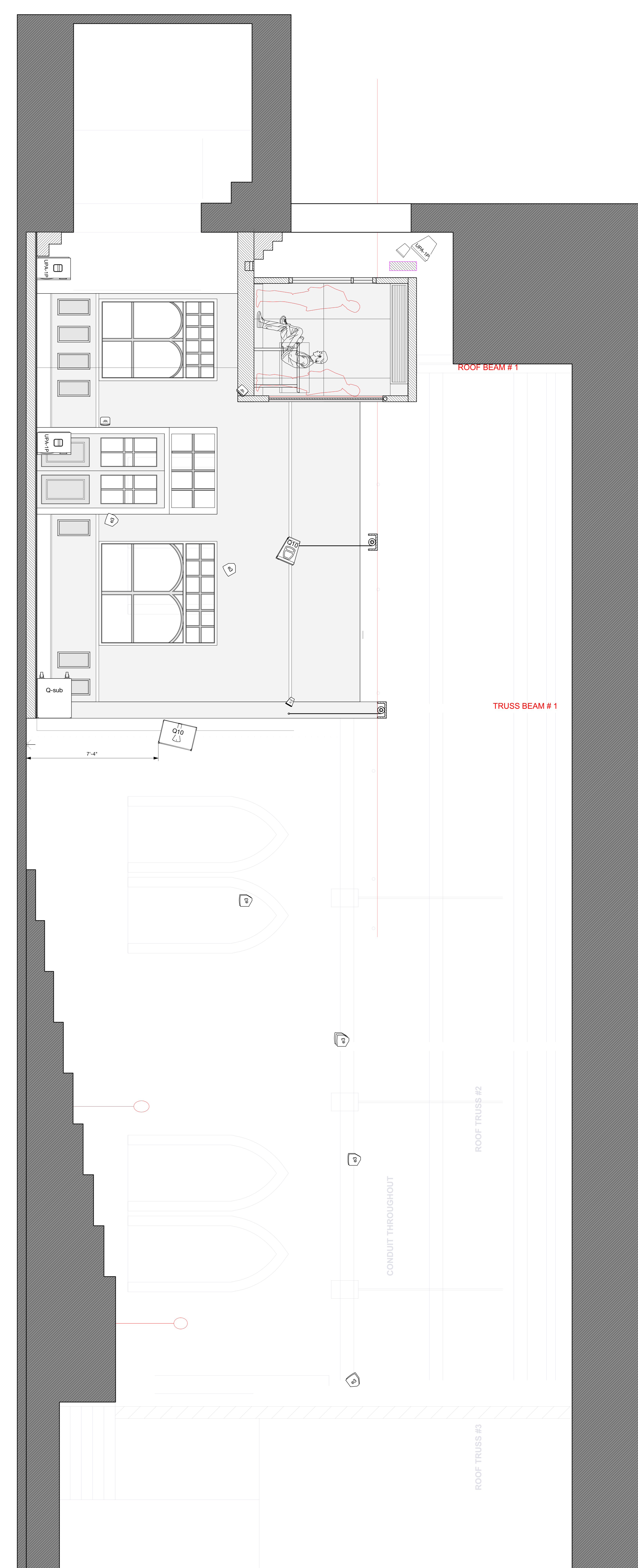


- Meyer UPA-1P
DSL FX
Deck
- JBL Control 1
Pul. Door
Set Mounted
- JBL Control 1
DSL FX
Broom behind DGR door
- Meyer UPA-1P (d)
Substage Sub
Located in shop
- d&b Q10
Overheads
Flown at Grid
- d&b Q-Sub
- Meyer UPA-1P
DSL FX
Deck
- JBL E3
Preset Del. special
Tables from Grid
(Drop 2)
- JBL E3
Dance
Moto send to st. 3
- JBL E3
Soprano
Delay set at amps



ATLANTIC THEATER COMPANY

HANGMEN
By Martin McDonagh
Directed by
Matthew Dunster

US Premiere of the Royal
Court Theatre Production

HANGMEN by MARTIN MCDONAGH

Directed by **MATTHEW DUNSTER**

Speaker Plot and Section

Sound Designer: **IAN DICKINSON**
Assoc. Sound Designer: **ADAM SALBERG**

Contact:
Adam Salberg
adsalberg@gmail.com

NOTES:

- All speaker placement is **ROUGH** and for reference only. Final placement to be determined in conversation with design team and Audio Supervisor prior to load-in.
- Delay speakers are daisy-chained
- All other FOH speakers on discrete amp channels, delay timing set at amps
- Microphones not pictured, exact placement TBD

LEGEND

- d&b Q10
- d&b Q-Sub
- d&b E3
- JBL Control 1
- Tectonic Elements Exciter (Clock)
- Meyer UPM-1P
- Meyer UPA-1P
- Meyer USW-1P

DATE: 1.24.18 Rev. 4