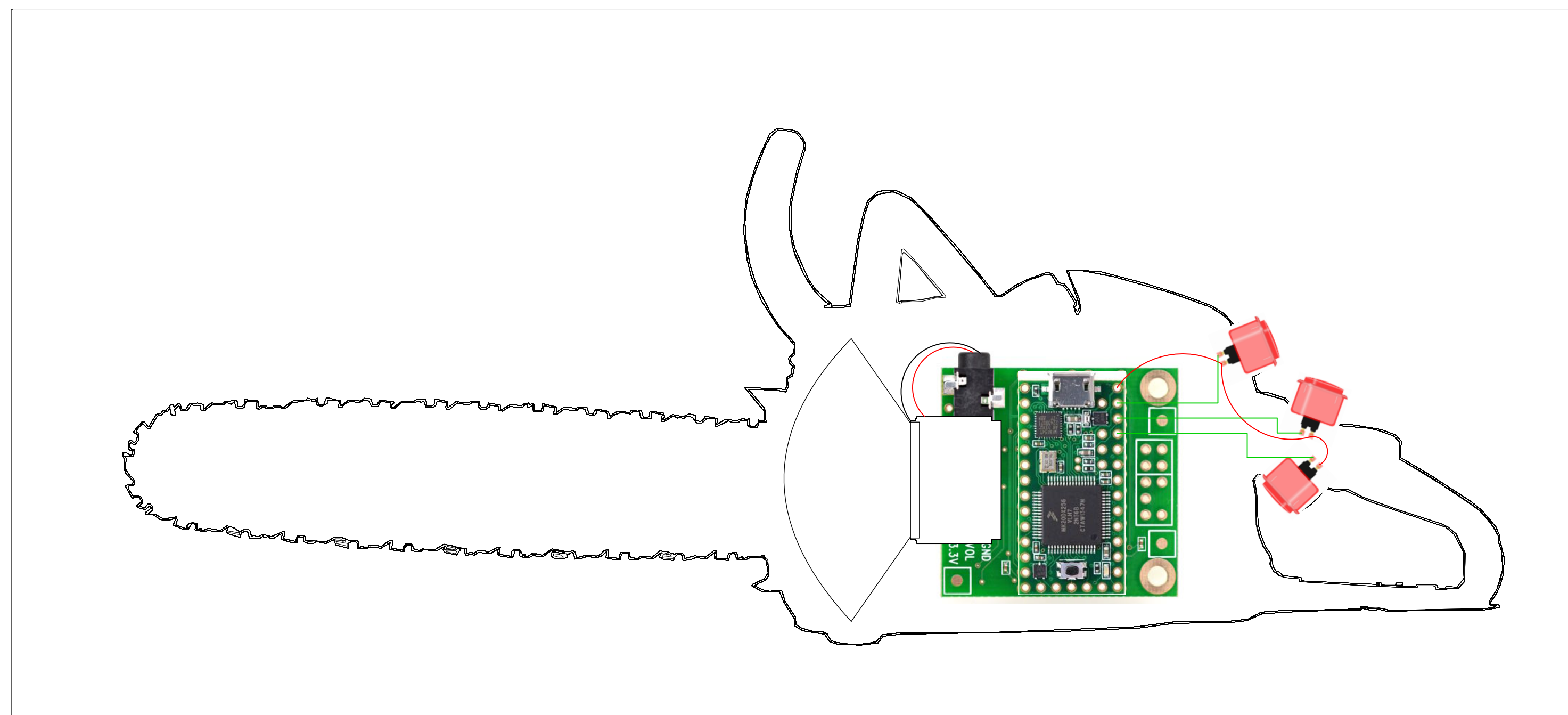


Very Real Fake Chainsaw

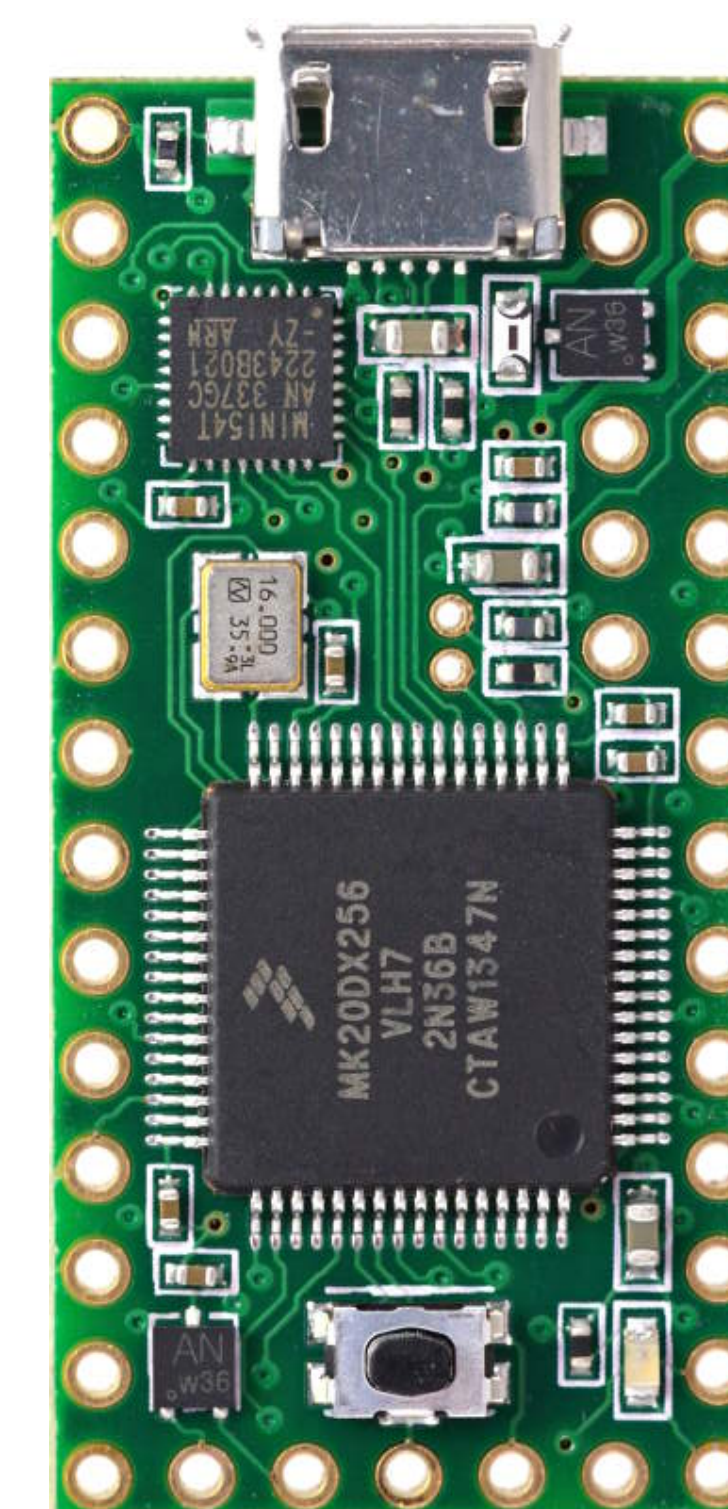


For Eddie's murder, we wanted Frank to enter from the house, run up the aisle with the chainsaw, and then murder him onstage center at the climax of "Hot Patootie". It was important to me that the audience source the sound of the chainsaw and its movement through the house, and that it be clearly articulated separately from the musical number.

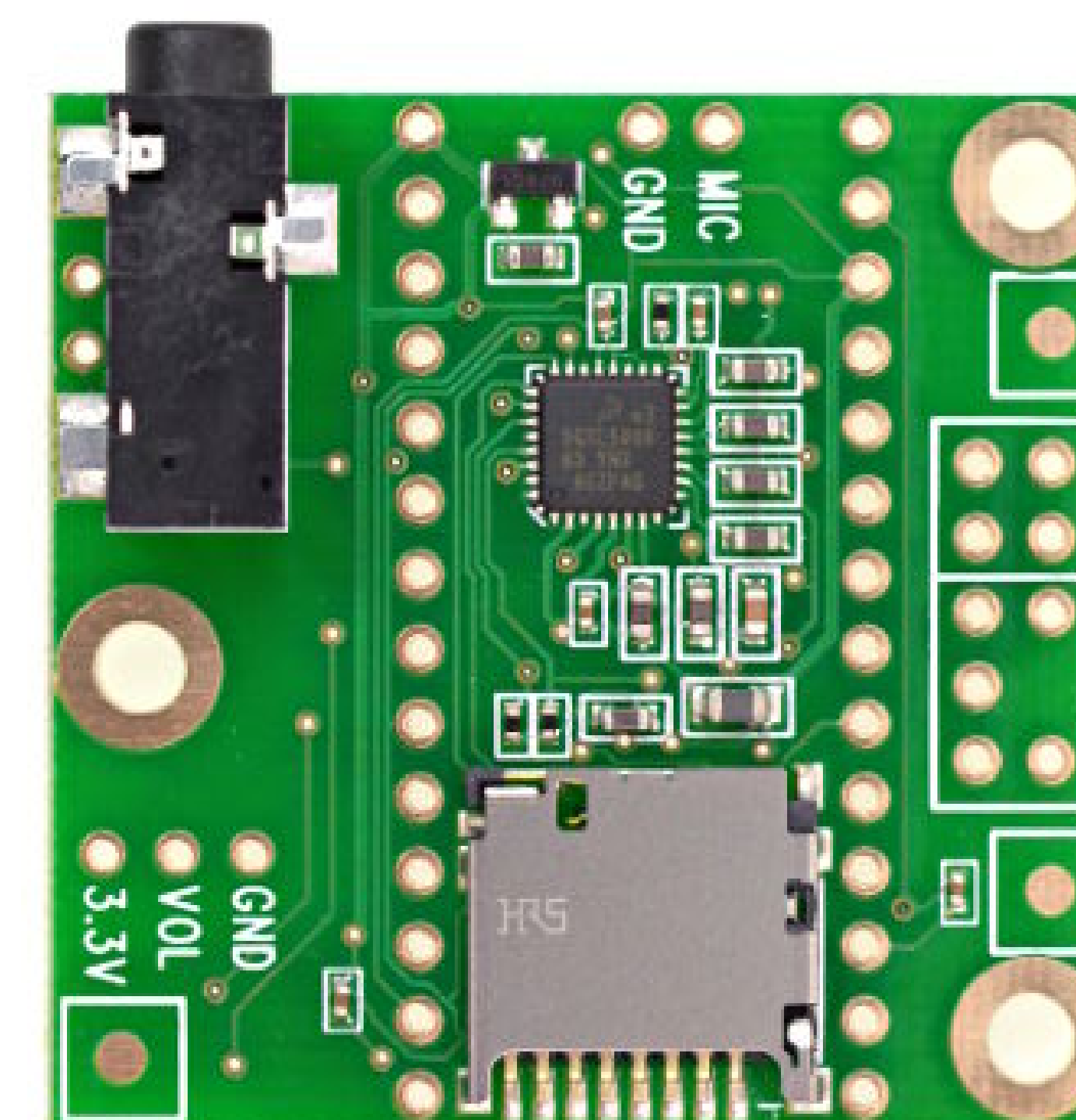
To accomplish this, I built and programmed a battery-powered playback system and hid it inside the body of an actual chainsaw. The system consisted of a small microcontroller with three buttons, each of which would trigger a distinct audio file and automatically apply a .5sec crossfade. The cues included a startup, a high rev for the entrance through the house, and a "murder" cue.



30W Megaphone (Horn Driver)



Teensy 3.1 Microcontroller



Teensy Audio Adapter Shield